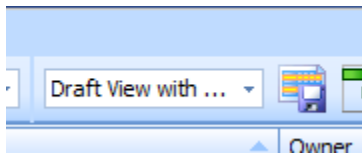


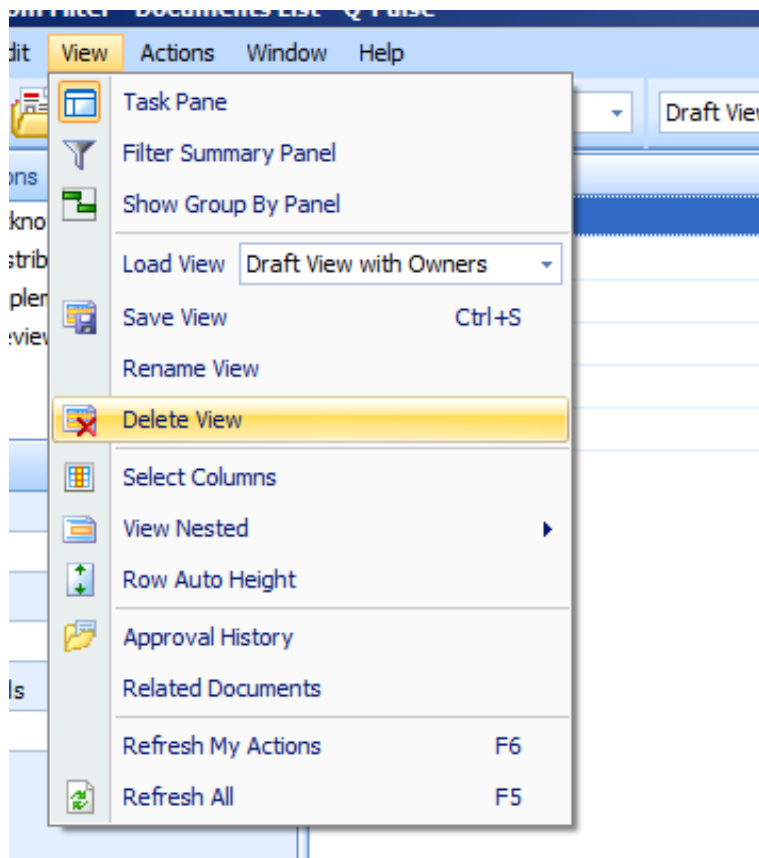
## Q-Pulse Tip- Q-Pulse Deleting Saved View

DELETING A SAVED VIEW:

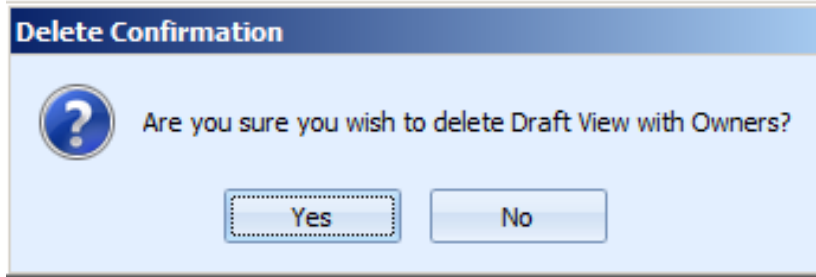
To view a view you've created, load the view by selecting it from the drop-down box in the window just to the left of the icon you used to save your view.



Once you've loaded the view that you wish to delete, click on "View" menu and select "Delete View".



A confirmation box will appear asking you to verify that you'd like to delete the view. Select Yes.



When you return to the dropdown box to load views, you'll notice that the view has been deleted.

